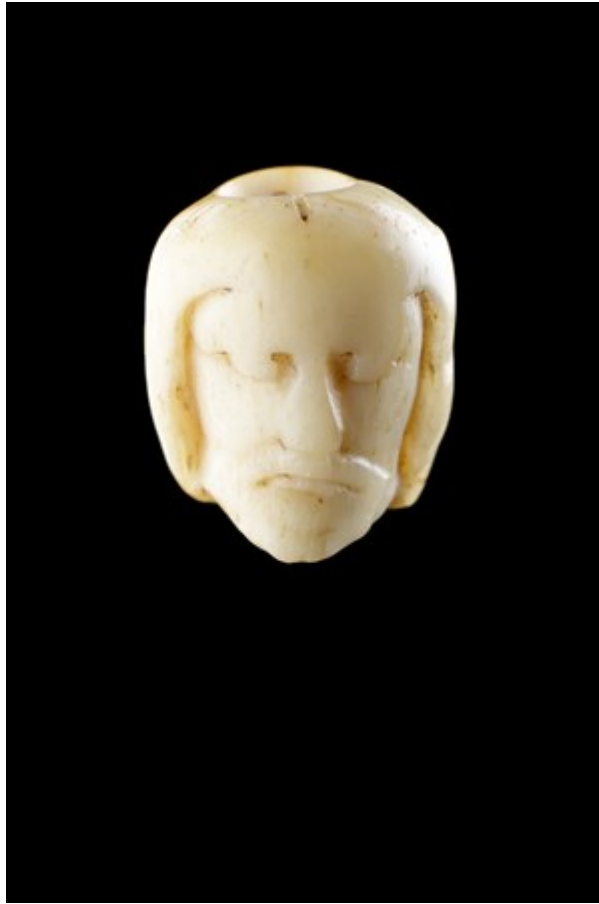


Finch & C^o



GERMAN DOUBLE SIDED CARVED BONE 'WENDEKOPF' ROSARY BEAD WITH AN IMAGE OF CHRIST CRUCIFIED AND A HUMAN SKULL

A GERMAN DOUBLE SIDED CARVED BONE 'WENDEKOPF' ROSARY BEAD WITH AN IMAGE OF CHRIST CRUCIFIED AND A HUMAN SKULL

FINE WORN SMOOTH PATINA

16TH CENTURY

SIZE: 2.5CM HIGH, 2CM WIDE, 2CM DEEP - 1 INS HIGH, ¾ INS WIDE, ¾ INS DEEP

A GERMAN DOUBLE SIDED CARVED BONE 'WENDEKOPF' ROSARY BEAD WITH AN IMAGE OF CHRIST CRUCIFIED AND A HUMAN SKULL

FINE WORN SMOOTH PATINA

16TH CENTURY

SIZE: 2.5CMHIGH, 2CMWIDE, 2CMDEEP - 1 INS HIGH, ¾ INS WIDE, ¾ INS DEEP

LITERATURE

MADE FOR DEVOTIONAL USE THE FUNCTION OF THESE BEADS WAS TO MARK THE BEGINNING AND END OF A PRAYER CYCLE. REMINDING THE BELIEVER OF HIS MORTALITY, THE PATERNOSTER OR TERMINAL BEAD ON A ROSARY REPRESENTS AN ACT OF INNER CONTEMPLATION. IT IS ALSO EVIDENCE OF THE ANONYMITY OF DEATH AND PERHAPS OF TRUTHS BEYOND THE TRANSIENT DETAILS OF LIFE.