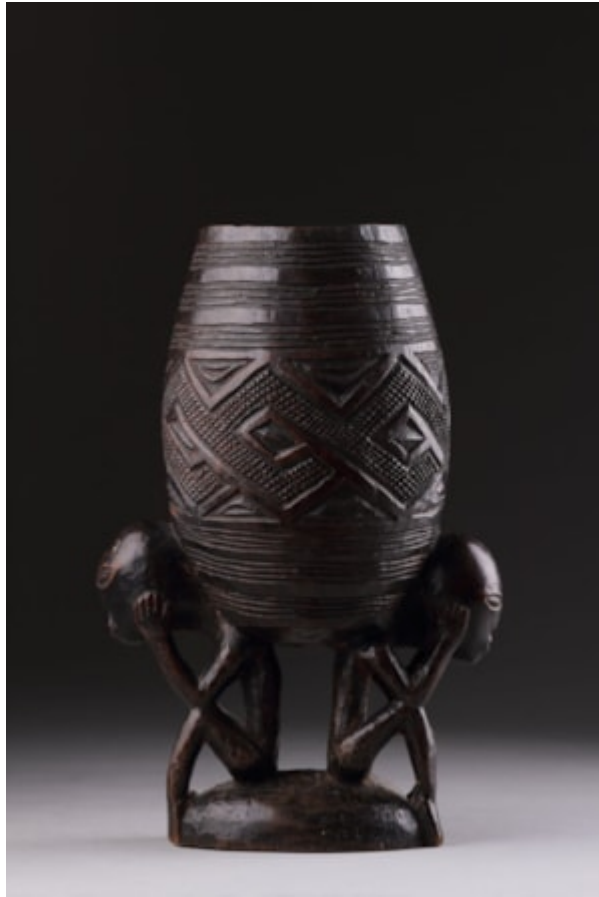


Finch & C^o



DEMOCRATIC REPUBLIC OF CONGO WONGO KUBA PEOPLES WOODEN PALM WINE CUP

A DEMOCRATIC REPUBLIC OF CONGO WONGO KUBA PEOPLES WOODEN PALM WINE CUP CARVED WITH LOZENGE MOTIFS
AND TWO ANTHROPOMORPHIC FIGURES

AN OLD LABEL TO THE INNER RIM

EARLY 20TH CENTURY

SIZE: 18CM HIGH, 12CM WIDE, 9CM DEEP - 7 INS HIGH, 4¾ INS WIDE, 3½ INS DEEP

A DEMOCRATIC REPUBLIC OF CONGO WONGO KUBA PEOPLES WOODEN PALM WINE CUP CARVED WITH LOZENGE MOTIFS
AND TWO ANTHROPOMORPHIC FIGURES

AN OLD LABEL TO THE INNER RIM

EARLY 20TH CENTURY

SIZE: 18CM HIGH, 12CM WIDE, 9CM DEEP - 7 INS HIGH, 4¾ INS WIDE, 3½ INS DEEP

LITERATURE

THE KUBA PEOPLES OF THE CONGO HAVE A PREFERENCE FOR ABSTRACT DECORATIVE PATTERNING, AND THE LOZENGE MOTIFS USED ON THIS CUP ARE BASED ON THEIR RAFFIA TEXTILES WHICH ARE WOVEN AND EMBROIDERED WITH THESE PARTICULAR DESIGNS SAID TO BE DERIVED FROM REPRESENTATIONS OF THE LIZARD. THESE CUPS ARE USED FOR PALM WINE WHICH IS STILL TODAY A VERY POPULAR AND FREQUENTLY SERVED DRINK. IN THE 19TH AND EARLY 20TH CENTURIES ELABORATELY CARVED CUPS WERE REGARDED BY THE KUBA AND WONGO MEN AS HIGHLY PRESTIGIOUS POSSESSIONS. HOWEVER, THEY HAVE GRADUALLY BEEN SUPPLANTED BY MODERN METAL OR PLASTIC VESSELS.

PROVENANCE

EX PRIVATE BELGIAN COLLECTION