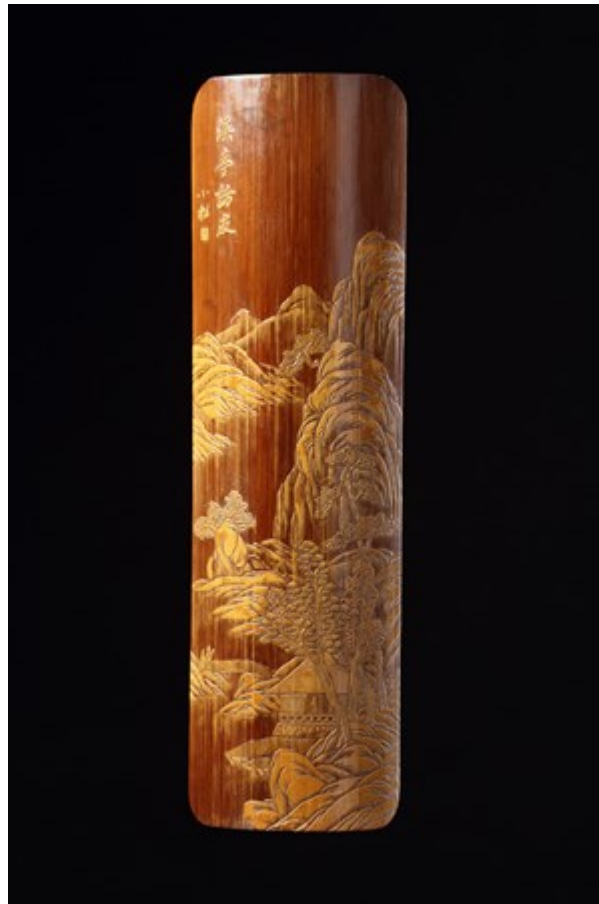


Finch & C^o



CHINESE SCHOLAR'S CALLIGRAPHIC BAMBOO WRIST REST

A FINE CHINESE SCHOLAR'S CALLIGRAPHIC BAMBOO WRIST REST CARVED IN THE 'LIU QING' STYLE WITH A VAST LANDSCAPE OF MOUNTAINS TREES AND RIVERS WITH THE FIGURES WALKING OVER A BRIDGE TOWARDS A SCHOLAR IN A PAVLION A RAISED FOUR-CHARACTER INSCRIPTION 'YI TING FANG YOU' (MEETING A FRIEND AT THE WELLSPRING PAVLION) AND THE SIGNATURE 'XIAOSONG' (LITTLE PINE) AND A SEAL 'ZHU' A CHINESE SURNAME THIS IS AN OPTIMISTIC ATTRIBUTION TO THE FAMOUS BAMBOO CARVER ZHU YING ONE OF THREE FAMOUS LATE MING CARVERS OF ONE FAMILY FROM JIADING, NOW SHANGHAI, WHO WAS ACTIVE IN THE WANLI PERIOD QING DYNASTY / 19TH CENTURY
SIZE: 25.5CM HIGH, 7CM WIDE - 10 INS HIGH, 2¾ INS WIDE

LITERATURE

ONE OF THE MOST IMPORTANT TOOLS OF THE CHINESE SCHOLAR'S STUDIO, WRIST RESTS WERE USED IN THE ART OF CALLIGRAPHY TO STEADY THE HAND WHILST PAINTING GRACEFUL BRUSH STROKES. THE BAMBOO WRIST REST IN ITS FUNCTION, MATERIAL AND DECORATION ACCURATELY REFLECTS THE WORK AND IDEALS OF THE SCHOLAR. ALTHOUGH VERY LITTLE IS KNOWN OF THE ORIGINS OF WRIST RESTS MOST WERE COMPOSED OF SIMPLE SEGMENTS OF BAMBOO, AND THEIR CARVERS WERE ALSO SKILLED IN THE ARTS OF PAINTING, POETRY AND CALLIGRAPHY.