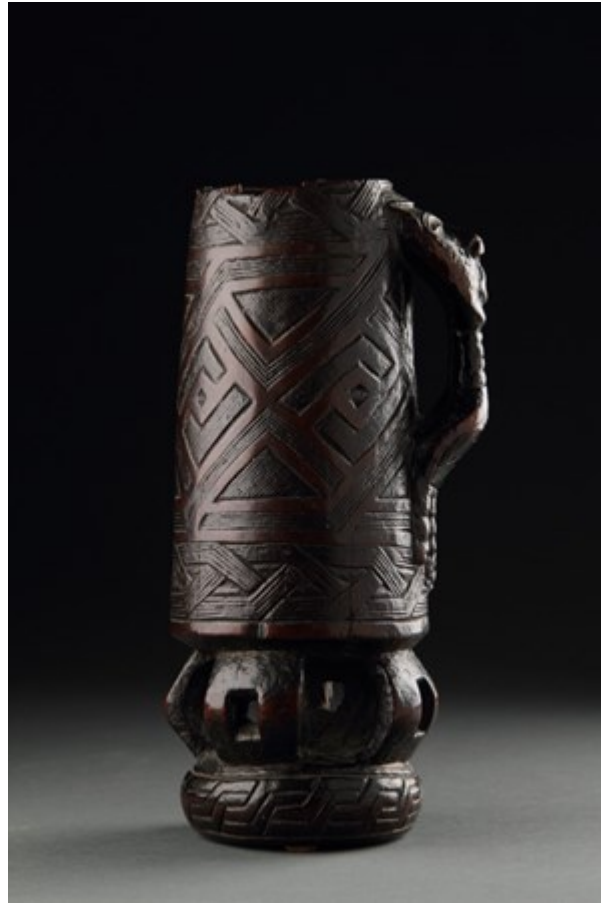


Finch & C^o



DEMOCRATIC REPUBLIC OF CONGO KUBA PEOPLES CEREMONIAL PALM WINE VESSEL

A DEMOCRATIC REPUBLIC OF CONGO KUBA PEOPLES CEREMONIAL PALM WINE VESSEL IN THE FORM OF A DRUM THE
HANDLE CARVED AS AN ABSTRACT HUMAN FORM
FINE OLD SMOOTH SILKY DARK BROWN PATINA

19TH CENTURY

SIZE: 22.5CM HIGH 10CM DIA. (MAX) - 9 INS HIGH, 4 INS DIA. (MAX)

LITERATURE

OF BEAKER FORM THIS CUP IS CARVED AS A REPRESENTATION OF A KUBA DRUM SUPPORTED BY FOUR BROAD CURVED LEGS THAT ATTACH THE DRUM TO A CIRCULAR BASE. ALSO TYPICAL OF KUBA DECORATED DRUMS IS THE ADDITION OF A CARVED WOODEN HANDLE THAT SUGGESTS A HUMAN BODY IN ABBREVIATED FORM; A HEAD AND NECK THAT MERGE INTO A WRIST AND HAND. THE CURVED FORM OF THE WRIST AND HAND STYLISTICALLY ECHOES THE SHAPE OF THE LEGS. THE INCISED SURFACE DECORATION ALSO IS LIKE THAT ON SOME ELABORATELY CARVED KUBA DRUMS.

THE KUBA PRODUCE SEVERAL STYLES OF TALL AND SHORT DRUMS THAT ARE AN ESSENTIAL COMPONENT OF ALL DANCE PERFORMANCES. THEIR APPEARANCE IS PRINCIPALLY ASSOCIATED WITH FUNERARY RITES WHERE DANCES ARE HELD IN HONOUR OF THE DECEASED INDIVIDUAL. IT IS THEREFORE POSSIBLE THAT THESE DRUM-SHAPED PALM WINE VESSELS, BY REPLICATING THE SHAPE OF A PARTICULAR FUNERARY DRUM, WERE USED TO CEREMONIALLY HONOUR DECEASED ANCESTORS.

Æ