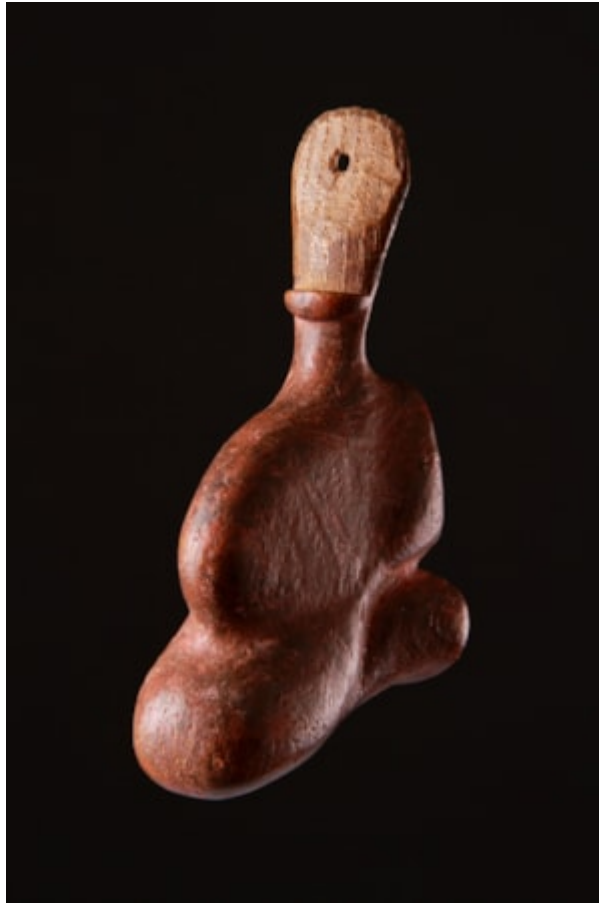


# *Finch & C<sup>o</sup>*



## **UNUSUAL CARVED PEAR-WOOD COMIC THEATRICAL NOSE**

AN UNUSUAL CARVED PEAR-WOOD COMIC THEATRICAL NOSE WORN BY A JESTER OR PULCINELLA FIGURE

TRACES OF REDDISH PINK PIGMENT

17TH – 18TH CENTURY

SIZE: 13.5CM HIGH, 5CM WIDE, 7CM DEEP – 5¼ INS HIGH, 2 INS WIDE, 2¾ INS DEEP

## **LITERATURE**

GROSSLY EXAGGERATED FACIAL FEATURES WERE PART OF THE MASKED THEATRICAL TRADITION OF COMMEDIA DELL'ARTE IN MANNERIST ITALY. THE NEAPOLITAN TRADITION FEATURED THE PROMINENT STAGE FIGURE OF PULCINELLA WHOSE MASK FEATURED A DEFORMED NOSE AND WHOSE INFLUENCE GAVE RISE TO 'MR PUNCH', AN ENGLISH COMEDY FIGURE POPULAR TO THIS DAY. MASKS ENABLED THE PLAYERS PERFORMING IN GROUPS OF THREE OR FOUR TO ASSUME A VARIETY OF ROLES, AND TO SWITCH ROLES WITH EASE AND RAPIDITY. THIS NOSE IS VERY EFFECTIVE WHEN WORN WITH A RIBBON TIED AROUND THE HEAD FROM THE HOLE IN THE TOP FLANGE, WHICH IS THEN HIDDEN, BY AN UPPER FACE OR CARNIVAL MASK.