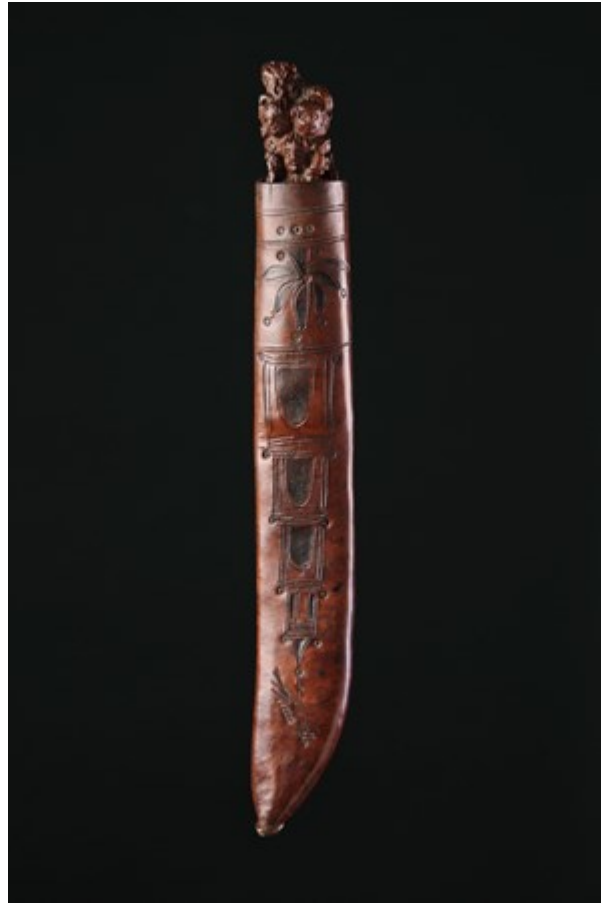


# Finch & C<sup>o</sup>



## **SOUTH NETHERLANDS CARVED BOXWOOD AND IRON BLADED EATING KNIFE**

A SOUTH NETHERLANDS CARVED BOXWOOD AND IRON BLADED EATING KNIFE  
CONTAINED IN ITS ORIGINAL DECORATED LEATHER SCABBARD, THE HANDLE CARVED WITH THE FIGURES OF FAITH,  
HOPE, CHARITY AND JUSTICE SURMOUNTED BY FOUR ANGELS HEADS ENDING WITH THE FIGURE OF A CROUCHING LION.  
THE BLADE MARKED; PROBABLY AMSTERDAM  
THE SCABBARD STAMP AND CUT DECORATED WITH A CHURCH STEEPLE SURMOUNTED BY A COCKEREL  
MD 17TH CENTURY  
SIZE: 26CMLONG – 10¼ INS LONG

## **LITERATURE**

THE BASIC FORM OF THE TABLE KNIFE, A SINGLE EDGED BLADE MORE OR LESS POINTED AND WITH A HANDLE HAS  
REMAINED VIRTUALLY UNCHANGED SINCE ANTIQUITY, ALTHOUGH THE DETAILS OF CONSTRUCTION, SHAPE AND  
DECORATION HAVE BEEN SUBJECTED TO MANY VARIATIONS. BEFORE THE LATE 17TH CENTURY IT WAS NORMAL  
PRACTICE ALL OVER EUROPE FOR EVERYONE TO CARRY HIS OWN CUTLERY, ESPECIALLY A KNIFE IN A LEATHER CASE.  
SOMETIMES THEY FITTED INTO SUBSIDIARY SHEATHS IN THE SCABBARD OF A DAGGER AND WERE REGULARLY WORN AS  
PART OF EVERYDAY DRESS. THE CARRYING OF INDIVIDUAL CASED KNIVES OR CUTLERY IS A TRADITION THAT SURVIVED  
IN MANY EUROPEAN PEASANT COMMUNITIES RIGHT INTO THE EARLY PART OF THE 20TH CENTURY. SHEATHS SURVIVING  
WITH THE CUTLERY THAT ORIGINALLY BELONGED TO THEM ARE RARE.