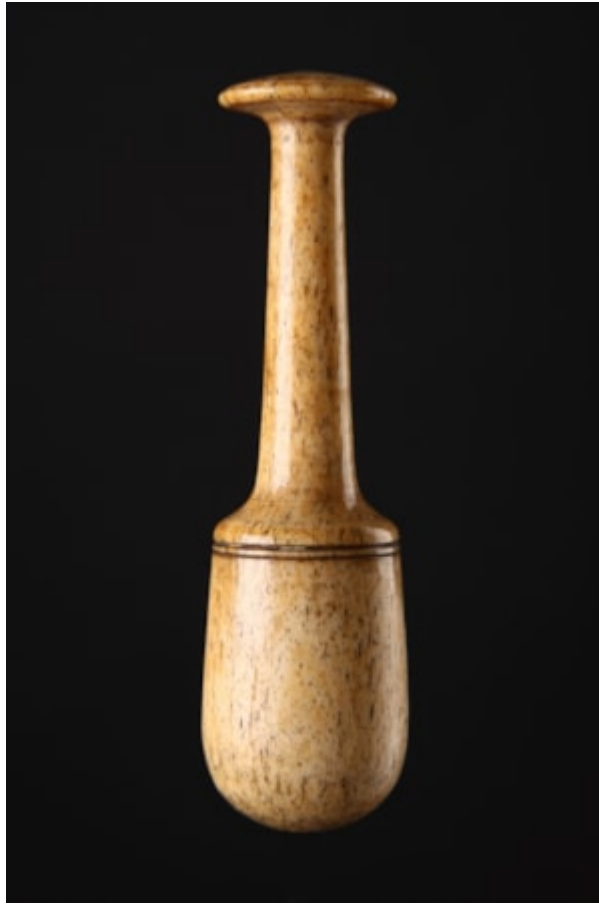


Finch & C^o



SAILORS SCRIMSHAW CARVED WHALEBONE PESTLE

A SAILORS SCRIMSHAW CARVED WHALEBONE PESTLE

MD 19TH CENTURY

SIZE: 11.5CMLONG – 4½ INS LONG

LITERATURE

MOST UTILITARIAN SCRIMSHAW WHALEBONE ITEMS WERE CARVED FOR USE ON BOARD SHIP, BUT SOMETIMES ITEMS OF USE IN THE KITCHEN WERE TAKEN HOME ON THE SAILOR'S RETURN TO HIS FAMILY. BECAUSE THE PREPARATION OF FOOD DEMANDED LONG HOURS AND BECAUSE MOST HOUSEWIVES TOOK PRIDE IN THEIR DAILY COOKING, KITCHEN UTENSILS WERE A POPULAR TYPE OF SCRIMSHAW.