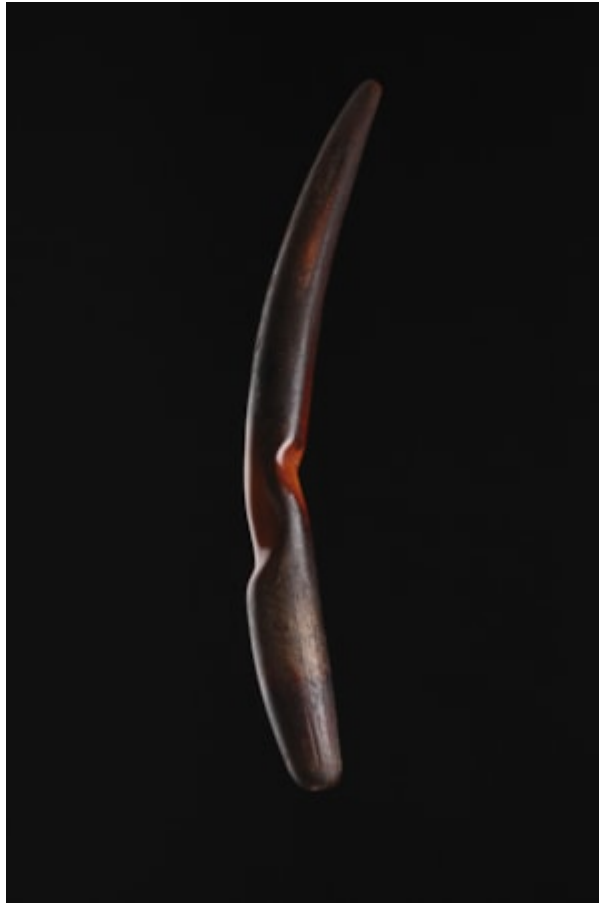


# *Finch & C<sup>o</sup>*



## **AFRICAN SOUTH CENTRAL ZAIRE KUBA IVORY PESTLE**

A FINE AFRICAN SOUTH CENTRAL ZAIRE KUBA IVORY PESTLE  
THE GRIP SHAPED AND WORN SMOOTH FROM A LONG PERIOD OF USE

RICH OLD REDDISH BROWN PATINA

EARLY 19TH CENTURY

SIZE: 60.5CM LONG – 23¾ INS LONG

SEE: FINCH & CO CATALOGUE NO. 13, ITEM NO. 47, FOR ANOTHER EXAMPLE

## **LITERATURE**

FORMED FROM THE OLD TUSK OF AN ELEPHANT, PERHAPS EMBLEMATIC OF A POWERFUL ANCESTRAL HUNTER, THESE IVORY PESTLES ARE USED BY KUBA WOMEN TO POUND FOOD THAT IS TO BE USED CEREMONIALLY AND RITUALLY. THE PESTLES ARE PASSED DOWN TO SUCCEEDING GENERATIONS THROUGH THE FEMALE LINE AND ARE REGARDED AS AMULETIC OBJECTS OF GREAT STATUS.