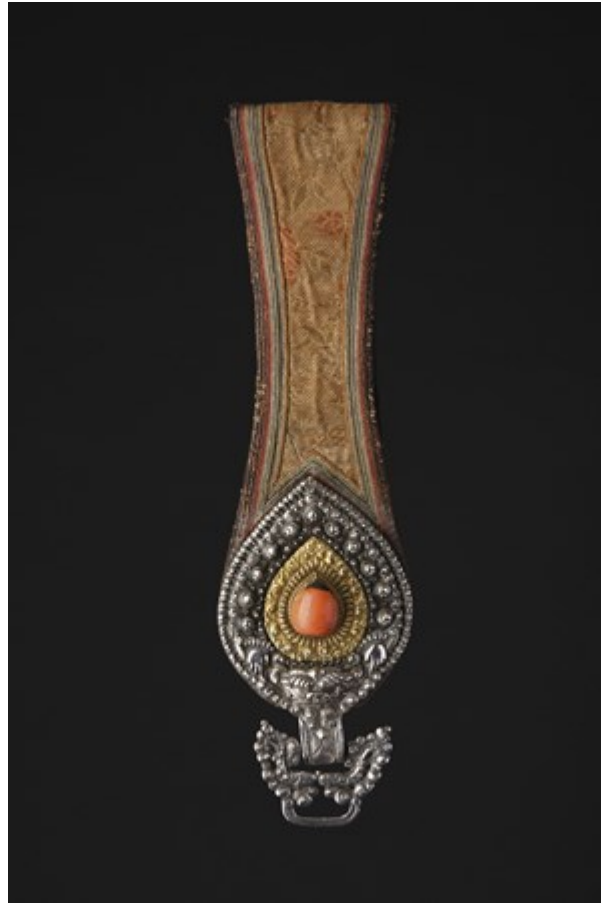


# Finch & C<sup>o</sup>



## TIBETAN SILVER, CORAL AND BROCADED SILK PENDANT 'DHARMAKAKRA' 19TH CENTURY

A FINE TIBETAN SILVER, CORAL AND BROCADED SILK PENDANT 'DHARMAKAKRA'

19TH CENTURY

SIZE: 30CM LONG – 11¼ INS LONG

SEE: FINCH & CO CATALOGUE NO 4. ITEM NO.130, FOR ANOTHER TIBETAN DHARMAKAKRA

### LITERATURE

'THIS CENTER OF HEAVEN  
THIS CORE OF EARTH  
THIS HEART OF THE WORLD  
FENCED AROUND BY SNOWY MOUNTAINS  
THE HEADLAND OF ALL RIVERS  
WHERE PEAKS ARE HIGH AND THE LAND IS PURE  
A COUNTRY SO GOOD  
WHERE MEN ARE BORN AS SAGES AND HEROES  
AND ACT ACCORDING TO GOOD LAWS'  
9TH CENTURY AD

HAVING THE 'GOOD LAWS' OF BUDDHISM AND PROTECTED BY THE WORLD'S TALLEST MOUNTAINS AND DRAWING ONLY WHAT THEY NEEDED FROM THE NEIGHBOURING CIVILISATIONS OF INDIA & CHINA, THE TIBETANS DEVELOPED A UNIQUE SOCIETY, PHILOSOPHY AND ART WHICH HAVE LONG INSPIRED FASCINATION AND DEEP RESPECT.

THIS DHARMAKAKRA IS MADE OF HAND-HAMMERED SILVER AND DECORATED WITH THE FACE OF A DHARMAPALA, A FIERCE PROTECTOR OF THE BUDDHIST FAITH. THESE PENDANT JEWELS ARE SYMBOLIC REPRESENTATIONS OF THE BUDDHA AND HIS DOCTRINE AND ARE OFTEN PRESENTED TO A LAMA, A TEACHER OR SPIRITUAL GUIDE FROM A STUDENT WHO WISHES TO APPLY FOR RELIGIOUS INSTRUCTION.

