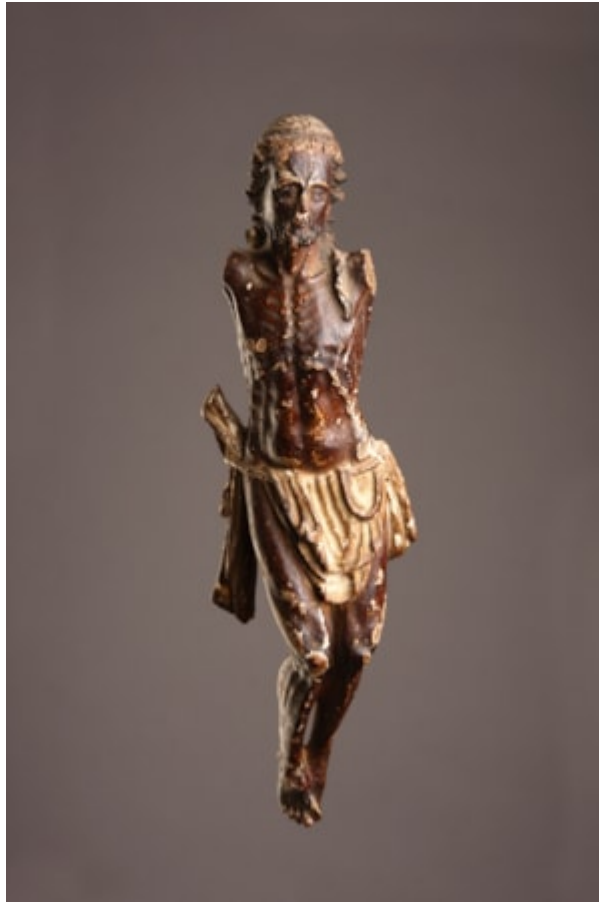


Finch & C^o



SOUTH GERMAN CARVED AND POLYCHROMED WOOD DEVOTIONAL CRUCIFIX

A SOUTH GERMAN CARVED AND POLYCHROMED WOOD DEVOTIONAL CRUCIFIX

AN OLD LABEL TO THE REVERSE INSCRIBED 'HANS MULTSCHER'

TRACES OF RED POLYCHROME TO THE FACE AND GILDING TO THE WHITE PERIZONIUM

16TH CENTURY

SIZE: 25CM HIGH – 9¾ INS HIGH

LITERATURE

IN THIS EXPRESSIVE SMALL SCULPTURE CHRIST IS SHOWN AS STILL ALIVE ON THE CROSS 'CHRISTO VIVO', HIS EYES OPEN EXPRESSING HIS TRIUMPH OVER DEATH AND SIN. FROM THE 14TH CENTURY AN EMPHASIS ON CHRIST'S SUFFERING WHICH CALLED THE BELIEVERS ATTENTION TO THE FRAILTY OF HIS HUMAN FLESH BECAME MORE PREVALENT. BY THE 16TH CENTURY THE IMAGE OF CHRIST ON THE CROSS WAS NO LONGER SOLELY THE SIGN OF GOD'S LOVE AND SACRIFICE FOR HUMANITY, IT BECAME THE FOCUS FOR HUMANITY'S OWN COMPASSION FOR THE SUFFERING SAVIOUR.