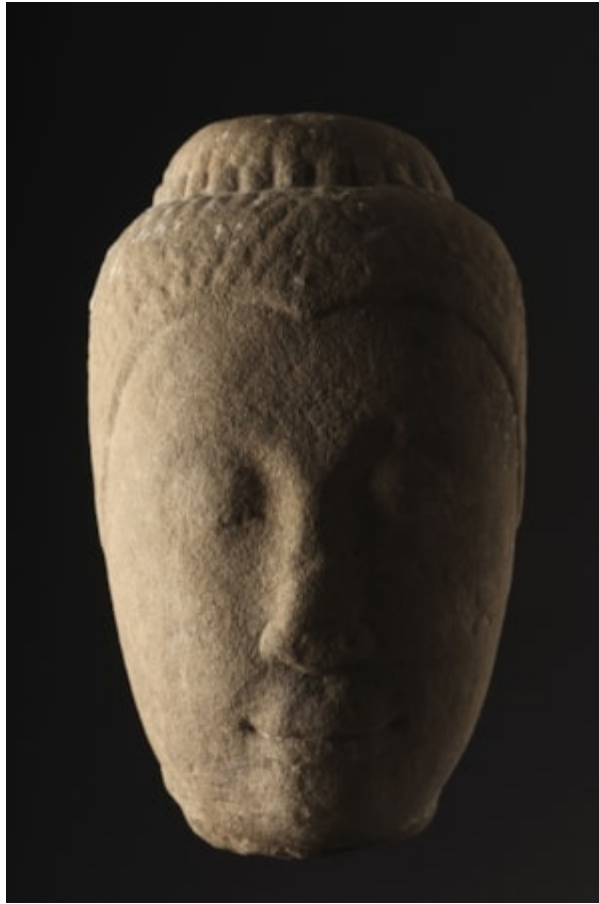


Finch & C^o



THAI KHMER TYPE CARVED SANDSTONE HEAD OF THE BUDDHA SHAKYAMUNI
A THAI KHMER TYPE CARVED SANDSTONE HEAD OF THE BUDDHA SHAKYAMUNI
WITH EYES CAST DOWNWARDS IN MEDITATION
12TH – 13TH CENTURY
SIZE: 24CM HIGH, 14CM WIDE – 9½ INS HIGH, 5½ INS WIDE

LITERATURE

CARVED IN A WELL-ESTABLISHED STYLE, BUDDHA HEADS AND STATUES OF THE KHMER TYPE ARE FOUND THROUGHOUT THAILAND AND DATE FROM THE PERIOD OF KHMER DOMINATION. ALTHOUGH THE SANDSTONE SURFACE HAS BEEN WORN BY TIME THE REMAINING NUCLEUS REVEALS THE TYPICAL KHMER STYLE OF SMALL LIPS WITH LONG DRAWN MOUTH CORNERS, A WELL BUILT STRAIGHT NOSE AND LONG EYES. THE WHOLE HEAD GIVES A SENSE OF KNOWING BENIGN WISDOM AND OF A QUIET SERENITY THAT IS BETRAYED BY A SMILE OF INWARD BLISS.