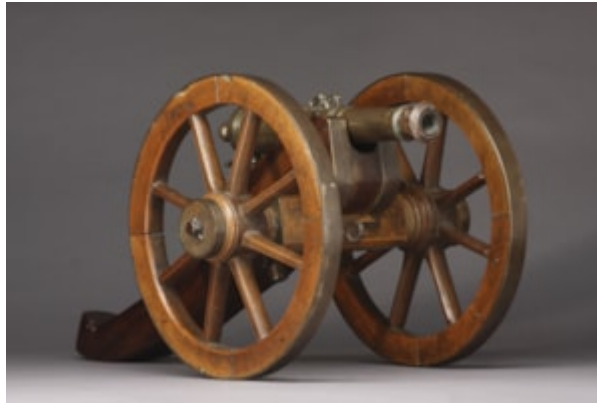


Finch & C^o



ENGLISH BRASS MOUNTED CARVED WALNUT AND BRONZE SIGNAL CANNON

A LARGE ENGLISH BRASS MOUNTED CARVED WALNUT AND BRONZE SIGNAL CANNON

MD 19TH CENTURY

SIZE: 32CM HIGH, 37CM WIDE, 63CM LONG – 12½ INS HIGH, 14½ INS WIDE, 24¾ INS LONG

LITERATURE

FIRST USED IN ANCIENT CHINA CANNON WERE AMONG THE EARLIEST FORMS OF GUNPOWDER ARTILLERY AND OVER TIME REPLACED SIEGE ENGINES ON THE BATTLEFIELD. DURING THE MIDDLE AGES CANNON BECAME STANDARDISED AND MORE EFFECTIVE IN ANTI-INFANTRY AND SIEGE ROLES BUT AFTER THIS PERIOD LARGE CANNON WERE GENERALLY ABANDONED IN FAVOUR OF LIGHTER MORE MANOUEVERABLE PIECES. CANNON ALSO TRANSFORMED NAVAL WARFARE AND THE ROYAL NAVY TOOK PARTICULAR ADVANTAGE OF THEIR FIREPOWER. AS RIFLING, THAT IS THE CASTING OF SPIRALING LINES INSIDE THE CANNON'S BARREL, BECAME MORE COMMON PLACE THE ACCURACY OF CANNON SIGNIFICANTLY IMPROVED AND THEY BECAME DEADLIER THAN EVER, ESPECIALLY TO INFANTRY. IN WORLD WAR I CANNON CAUSED THE MAJORITY OF ALL DEATHS.

SIGNAL CANNON WERE OFTEN USED TO START A YACHT RACE OR TO WARN THE OTHER NAVAL VESSELS OF APPROACHING DANGER.