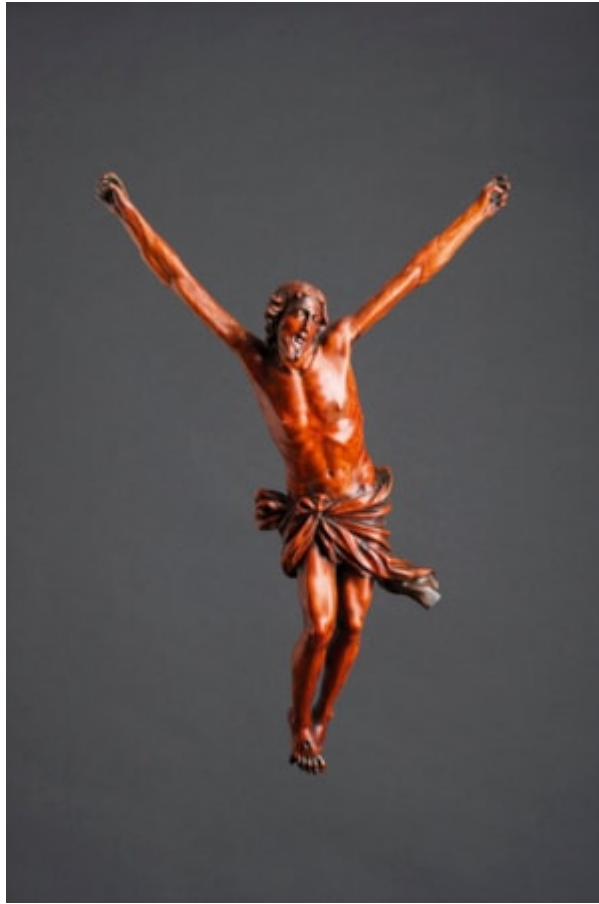


Finch & C^o



SOUTH GERMAN BAROQUE BOXWOOD FIGURE OF CHRIST

A FINE AND LARGE SOUTH GERMAN BAROQUE BOXWOOD FIGURE OF CHRIST ON THE CROSS

‘CHRISTO VIVO’

HIS EYES AND MOUTH OPEN IN HIS CALL TO GOD

CIRCA 1650

SIZE: 58CM HIGH – 22¾ INS HIGH (MAX)

LITERATURE

‘HE IS DESPISED AND REJECTED OF MEN; A MAN OF SORROWS, AND ACQUAINTED WITH GRIEF: AND WE HID AS IT WERE
OUR FACES FROM HIM; HE WAS DESPISED, AND WE ESTEEMED HIM NOT.

SURELY HE HATH BORNE OUR GRIEF’S, AND CARRIED OUR SORROWS: YET WE DID ESTEEM HIM STRICKEN, SMITTEN OF
GOD, AND AFFLICTED.

BUT HE WAS WOUNDED FOR OUR TRANSGRESSIONS, HE WAS BRUISED FOR OUR INIQUITIES: THE CHASTISEMENT OF
OUR PEACE WAS UPON HIM; AND WITH HIS STRIPES WE ARE HEALED.’

ISAIAH 53:2-5