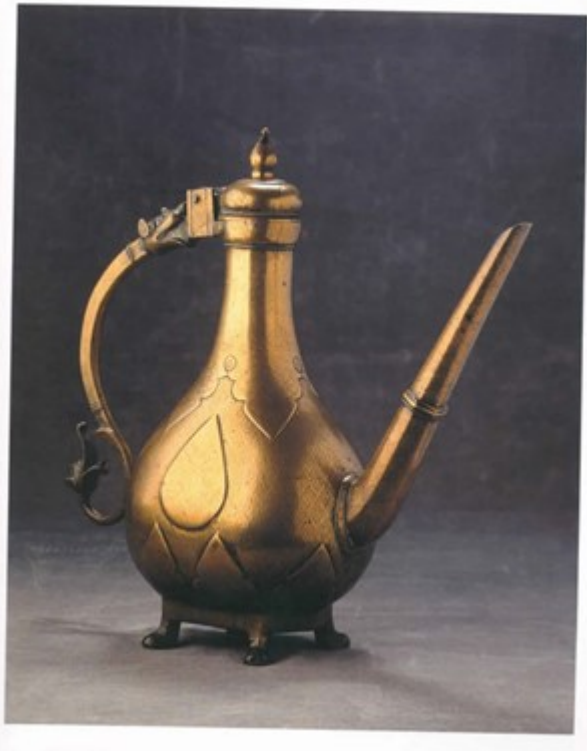


Finch & C^o



A NORTHERN INDIAN MUGHAL BRONZE 'AFTABA' OR TALL EWER, WITH FINELY CAST DRAGON HEAD TERMINALS
A NORTHERN INDIAN MUGHAL BRONZE 'AFTABA' OR TALL EWER, WITH FINELY CAST DRAGON HEAD TERMINALS

18TH CENTURY

SIZE: 38CM HIGH

LITERATURE

IN THE RECENTLY PUBLISHED BOOK BY MARK ZEBROWSKI ON 'GOLD, SILVER AND BRONZE FROM THE MUGHAL INDIA', (CHAPTER 10, PG 165) THERE IS AN ILLUSTRATION OF A VERY SIMILAR EWER THAT IS IN THE STAATLICHE MUSEUM IN BERLIN. THE FEET AND CAST DRAGON HEAD TERMINALS CORRESPONDS EXACTLY TO THOSE IN THIS EXAMPLE.

THIS PEAR SHAPE GOES BACK TO THE 17TH CENTURY AND WAS COPIED IN BLUE AND WHITE PORCELAIN BY THE CHINESE WHO THEN EXPORTED THEM TO THE MUGHAL MARKET. IN TURN THE MUGHALS ALSO EXPORTED THEIR BRASS PEAR SHAPED EWERS TO THE MIDDLE EAST, AND A 17TH CENTURY ONE WAS FOUND IN SYRIA TO PROVE THE POINT.

THIS EXAMPLE DATES FROM THE 18TH CENTURY AND AT THAT PERIOD, AS ZEBROWSKI HAS DEMONSTRATED, THE PEAR SHAPE CHANGED INTO A MORE PRONOUNCED ELONGATED FORM AND THE PEDESTAL BASE GREW FOUR LITTLE FEET WHICH GAVE THE EWERS MORE HEIGHT, AND PERHAPS A LITTLE MORE ELEGANCE.