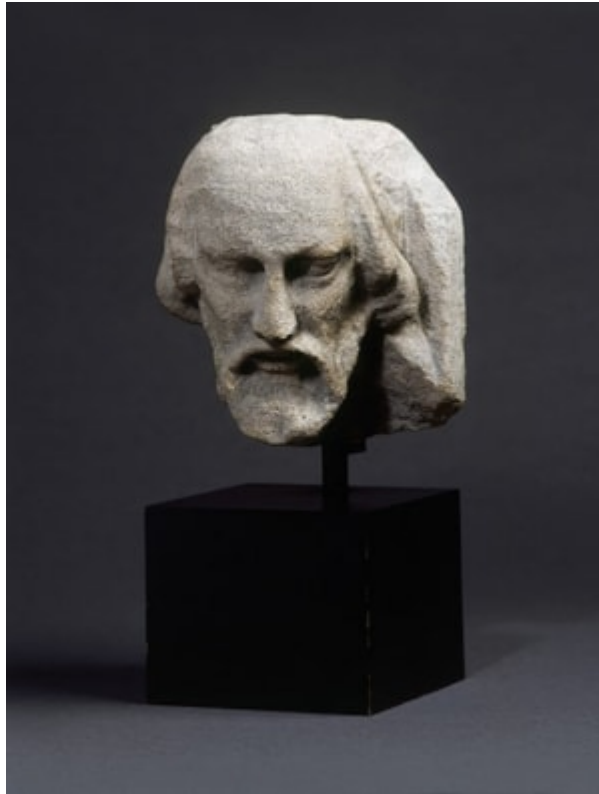


Finch & C^o



A LATE MEDIEVAL ENGLISH LIMESTONE HEAD OF CHRIST

91 A LATE MEDIEVAL ENGLISH LIMESTONE HEAD OF CHRIST

PERHAPS A LABEL STOP

2ND QUARTER OF THE 14TH CENTURY

SIZE: 17 CM HIGH, 14 CM WIDE, 17 CM DEEP – 6¾ INS HIGH, 5½ INS WIDE, 6¾ INS DEEP

30 CM HIGH – 11¾ INS HIGH (INCLUDING STAND)

LITERATURE

THE WHOLE OF LIMOUSIN WAS CEDED TO HENRY III OF ENGLAND BY ST LOUIS IN 1259 AND THUS THERE WAS CLOSE CONTACT BETWEEN THE ENGLISH AND FRENCH MASTER MASONS. IT IS THEREFORE NO COINCIDENCE THAT THE SCREENS OF BRIDLINGTON PRIORY AND LIMOGES CATHEDRAL ARE ALMOST IDENTICAL AND PRACTICALLY CONTEMPORARY AS BY THE BEGINNING OF THE 14TH CENTURY THERE EXISTED A PARALLEL SERIES OF MOTIVES AND IDEAS. IN ENGLAND THESE BECAME AN INTEGRAL PART OF A NEW AND HIGHLY DISTINCTIVE STYLE, THE 'PERPENDICULAR'.