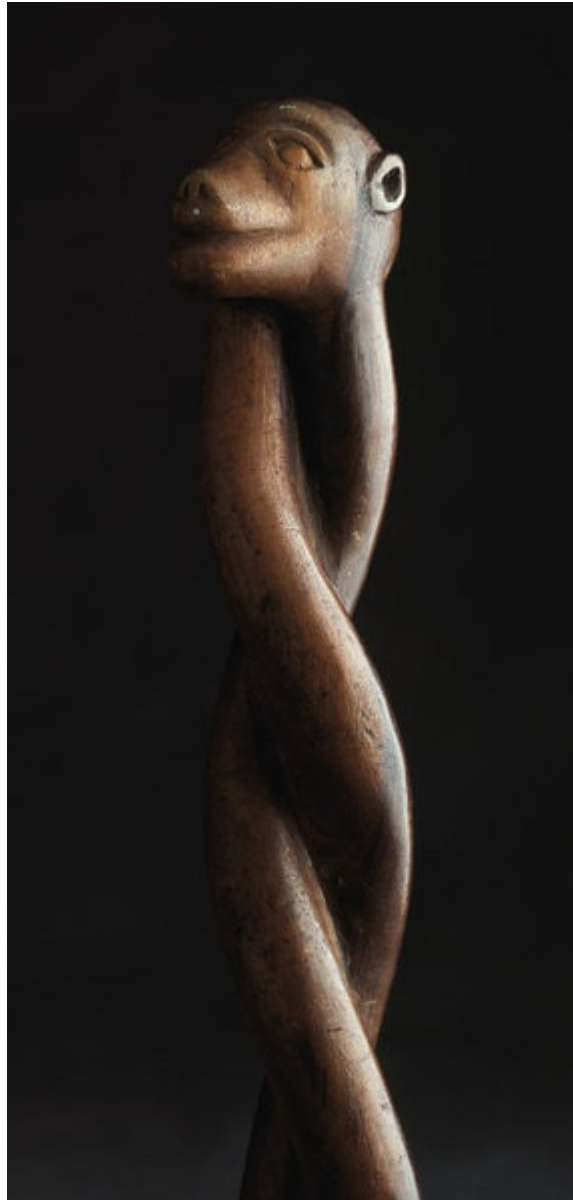


# *Finch & C<sup>o</sup>*



## **A FINELY CARVED HARDWOOD ZULU STAFF WITH A BABOON HEAD**

A FINELY CARVED HARDWOOD ZULU STAFF WITH THE HEAD OF A BABOON ON AN ENTWINED STEM

LATE 19TH CENTURY

SIZE : 99 CMLONG

39 INS LONG

## **LITERATURE**

IN THE LAST QUARTER OF THE 19TH CENTURY A NEW COMMERCIAL MARKET APPEARED FOR THE ZULU WOOD CARVERS IN CARVING AND SELLING WALKING STICKS TO EUROPEAN SOLDIERS ARRIVING TO FIGHT IN THE ANGLO ZULU AND SOUTH AFRICAN WARS.

THE 'BABOON MASTER' WORKING, IT IS THOUGHT, IN THE REGION OF PIETERMARITZBORG AND DURBAN CARVED SUCH STICKS INCORPORATING THE FORM OF A BABOON INTO THE HANDLE.