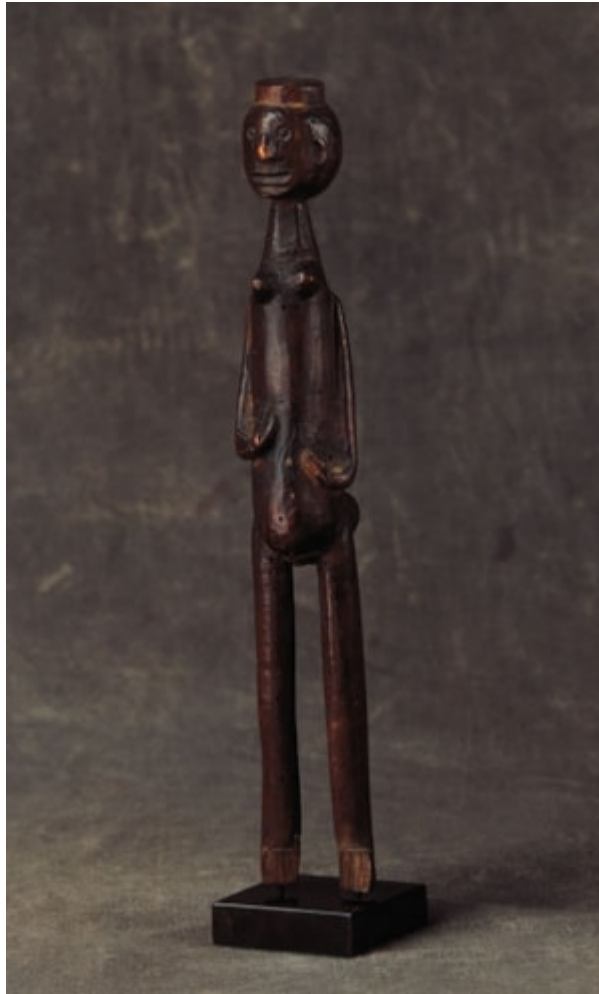


Finch & C°



A RARE SOUTH AFRICAN CARVED WOOD FIGURE , PROBABLY TSONGA

A RARE SOUTH AFRICAN CARVED WOOD FIGURE , PROBABLY TSONGA

19TH CENTURY

SIZE : 30 CM HIGH

11¾ INS HIGH

LITERATURE

THE TSONGA ARE DESCENDANTS OF THE NGUNI WHO FLED FROM SHAKA IN THE 19TH CENTURY AND SETTLED IN MOZAMBIQUE. THE TRANSVAAL TSONGA MADE PAIRS OF MALE AND FEMALE FIGURES FOR USE IN INITIATION CEREMONIES.

YOUNG MEN WERE TAUGHT ABOUT SEXUAL AND SOCIAL MORES WITH THESE FIGURES BEING USED AS DIDACTIC AIDS. THE EXPLICITNESS OF THIS FIGURE'S BREASTS AND GENITALIA, AND THE HORSESHOE-SHAPED EARS, ALL SUGGESTS THAT IT WAS MADE FOR THIS USE BY TSONGA PEOPLES.