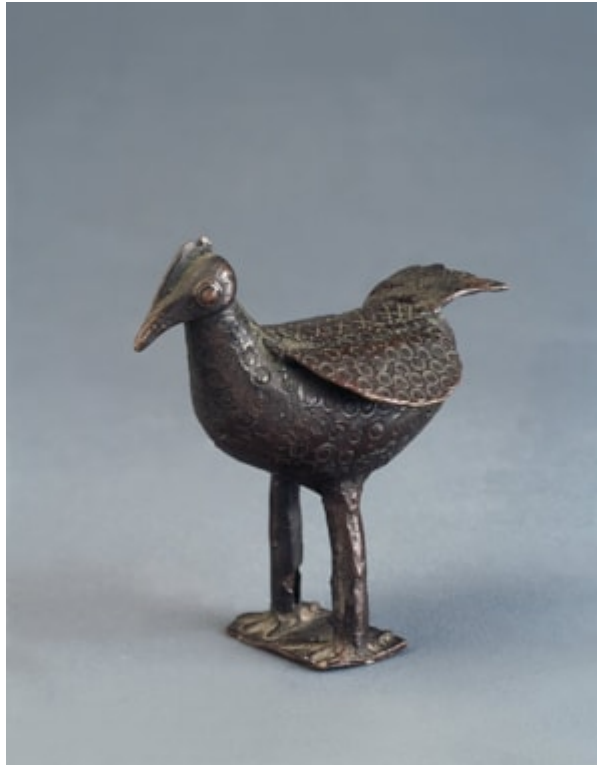


# *Finch & C<sup>o</sup>*



## **AN EDO, BENIN, WEST AFRICAN CAST BRASS SCULPTURE OF A COCKEREL**

AN EDO, BENIN, WEST AFRICAN CAST BRASS SCULPTURE OF A COCKEREL

OLD REDDISH BROWN PATINA

18TH – 19TH CENTURY

SIZE : 9 CM HIGH, 13 CM DEEP, 8.5 CM WIDE – 3¼ INS HIGH, 5¼ INS DEEP, 3¼ INS WIDE

## **LITERATURE**

CF A SIMILAR EXAMPLE IS ILLUSTRATED IN 'WORKS OF ART FROM BENIN' THE PITT RIVERS MUSEUM, FARNHAM, DORSET  
1900 , NO. 301

BRASS WAS A MATERIAL WITH ROYAL CONNOTATIONS IN BENIN AND ITS USE WAS STRICTLY CONTROLLED, WITH GUILD CRAFTSMEN WORKING UNDER THE PATRONAGE OF THE COURT. BRASS HAS A COMPLEX MEANING. AS A MATERIAL IT NEVER CORRODES OR RUSTS AND THUS IT STANDS FOR PERMANENCE AND THE CONTINUITY OF KINGSHIP. BRASS IS THOUGHT TO BE RED IN COLOUR AND THIS IS CONSIDERED BY THE EDO AS 'THREATENING', THAT IS TO HAVE THE POWER TO DRIVE AWAY EVIL FORCES. ITS SHINY SURFACE IS CONSIDERED BEAUTIFUL AND IN THE PAST ROYAL BRASSES WERE CONSTANTLY POLISHED TO A HIGH SHEEN.