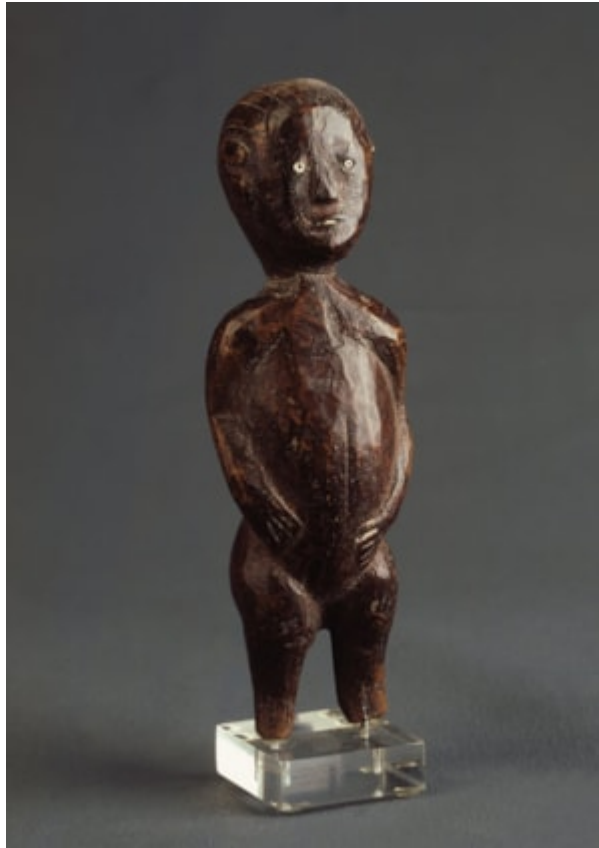


# *Finch & C<sup>o</sup>*



## **AN EAST AFRICAN LOMWE / NGURU CARVED WOOD FIGURE**

AN EAST AFRICAN LOMWE / NGURU CARVED WOOD FIGURE , NORTHERN MOZAMBIQUE , SOUTHERN MALAWI , WITH GLASS  
BEAD EYES . OLD SHINY PATINA  
LATE 19 TH CENTURY  
SIZE : 16.5 CM HIGH – 6½ INS HIGH

## **LITERATURE**

PRIMARILY AGRICULTURALISTS THE LOMWE PEOPLES , KNOWN ALSO AS NGURU , WERE FORCED TO MIGRATE INTO  
SOUTHERN MALAWI AND NORTHERN MOZAMBIQUE FROM AN AREA FURTHER TO THE EAST BY THE FAMINE OF 1900 . THEY  
HAVE SINCE INTERMIXED WITH MANY CLOSELY RELATED NEIGHBOURING GROUPS .  
THIS FIGURE HAS A HOLE IN THE TOP OF HIS HEAD SUGGESTING A USE FOR SNUFF , AND FROM THE EVIDENT HANDLING  
AND PATINA ON THE FIGURE IT IS ALSO POSSIBLE THAT IT WAS A STAFF FINIAL .