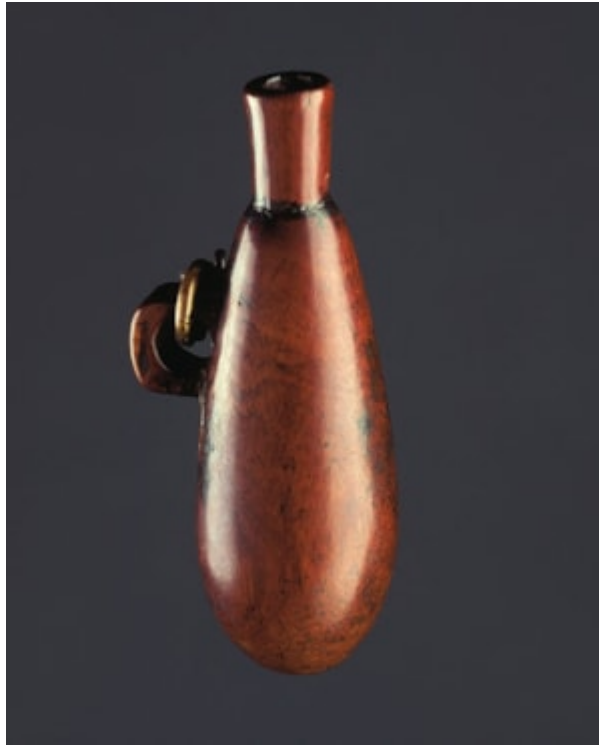


# *Finch & C<sup>o</sup>*



## **A WELL PATINATED CARVED ELONGATED WOOD ZULU MAN'S SNUFF CONTAINER**

A WELL PATINATED CARVED ELONGATED WOOD ZULU MAN'S SNUFF CONTAINER . KWA ZULU NATAL , SOUTH AFRICA

19 TH CENTURY

CLOSE GRAINED WOOD WAS SELECTED FOR THE MAKING OF THESE ELONGATED SNUFF CONTAINERS . MADE OF A MALE MATERIAL , THE LONG PHALLIC FORM WAS THOUGHT BEST SUITED TO A SNUFF FOR USE BY A MAN . MEN WERE RESPONSIBLE FOR MAKING OBJECTS IN THE LONG LASTING MATERIALS OF WOOD , HORN AND METAL WHILST THE MORE FRAGILE ONES OF CLAY , GRASS AND GOURDS WERE THE DOMAIN OF WOMEN .